

# ILE SAINT-LOUIS

6 RUE JEAN DU BELLAY, 75004 PARIS

DESIGN CONCEPT PRESENTED BY

**LEGEARD**  
STUDIO

**SUMMARY**

FLOOR PLAN

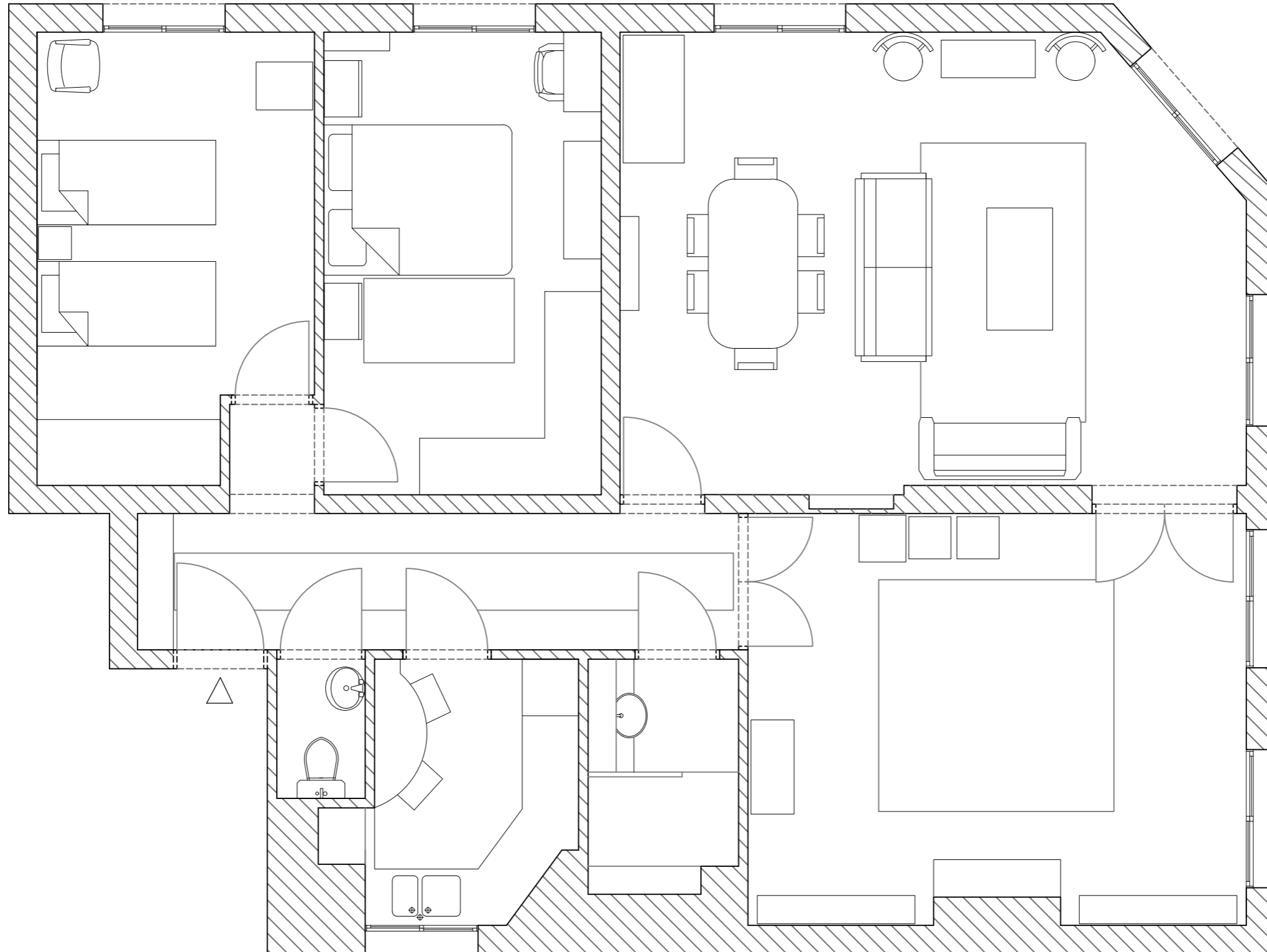
MOODBOARD

FURNITURE

# FLOOR PLAN

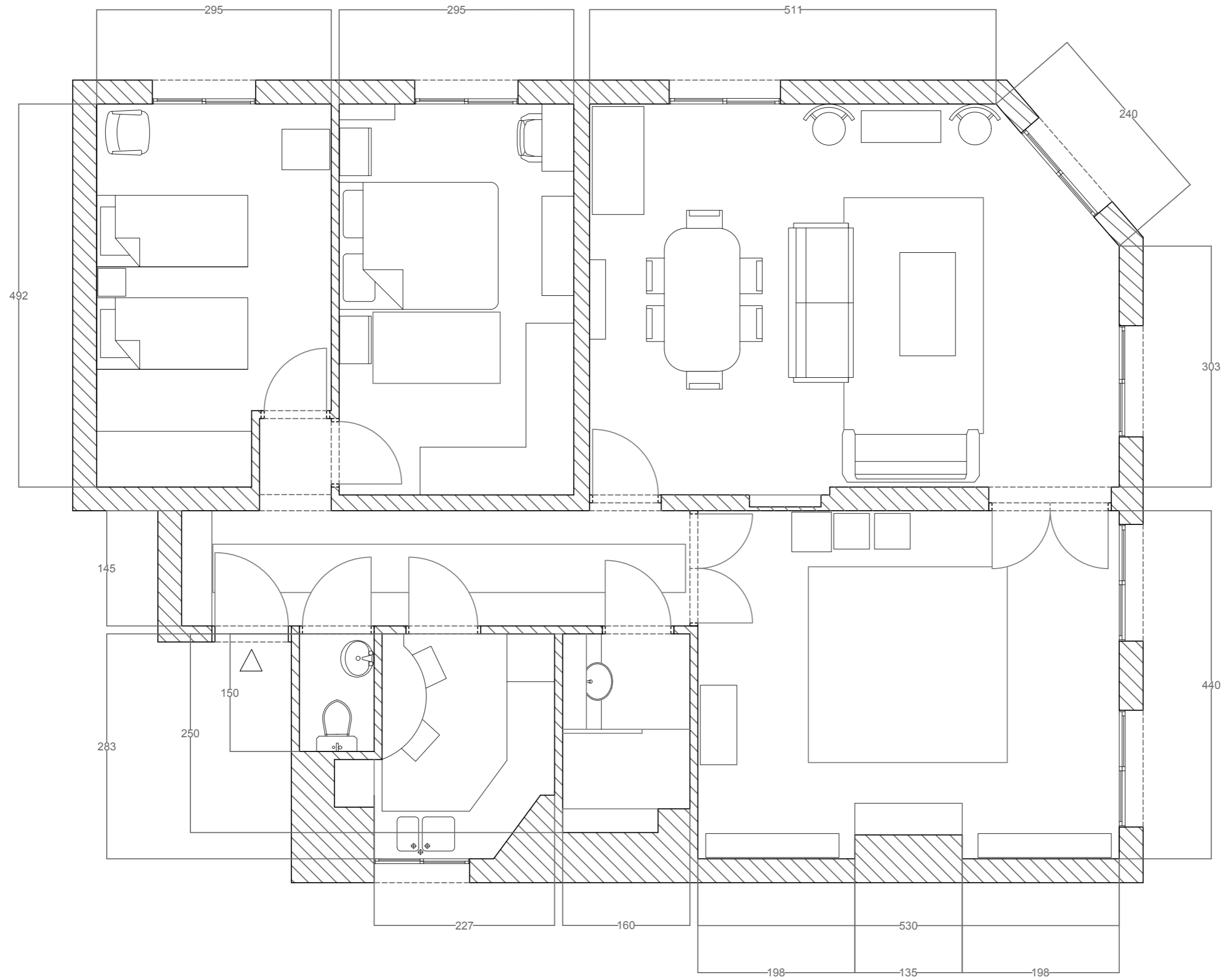
# FLOOR PLAN

OLD



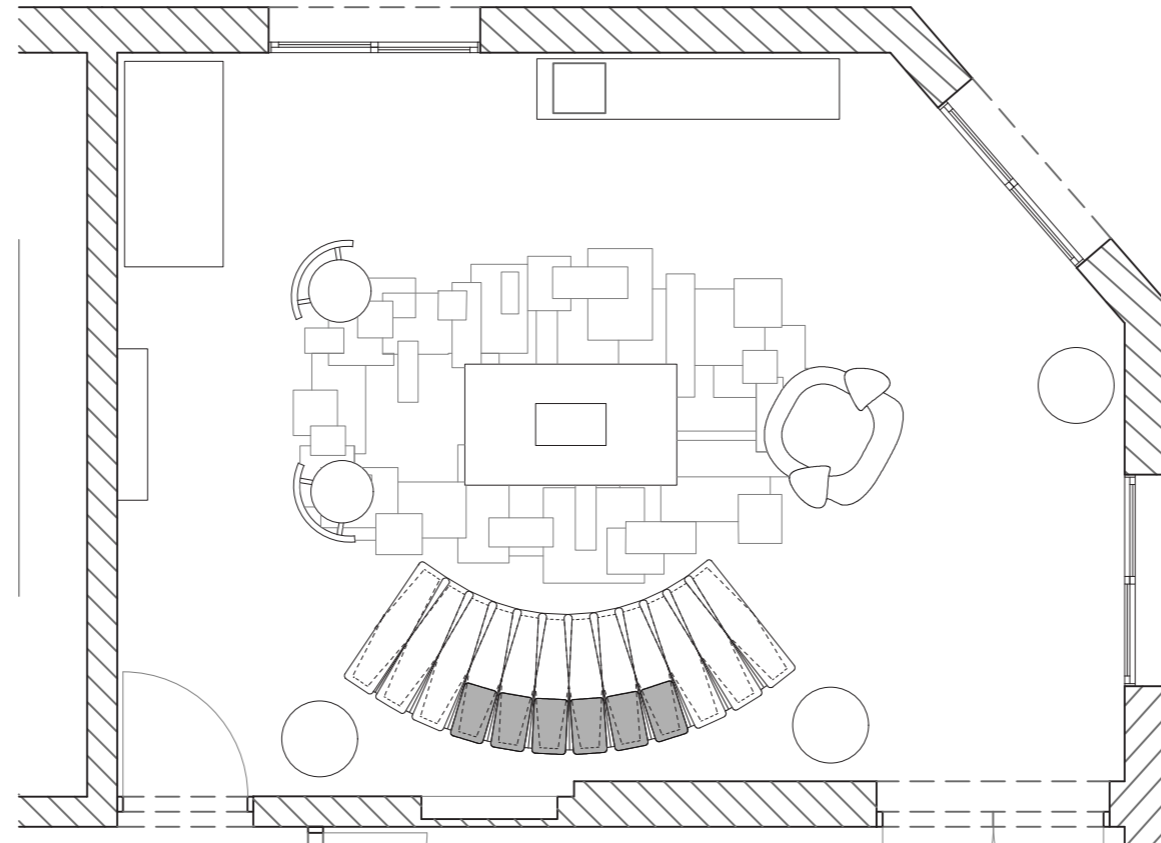
# FLOOR PLAN

OLD



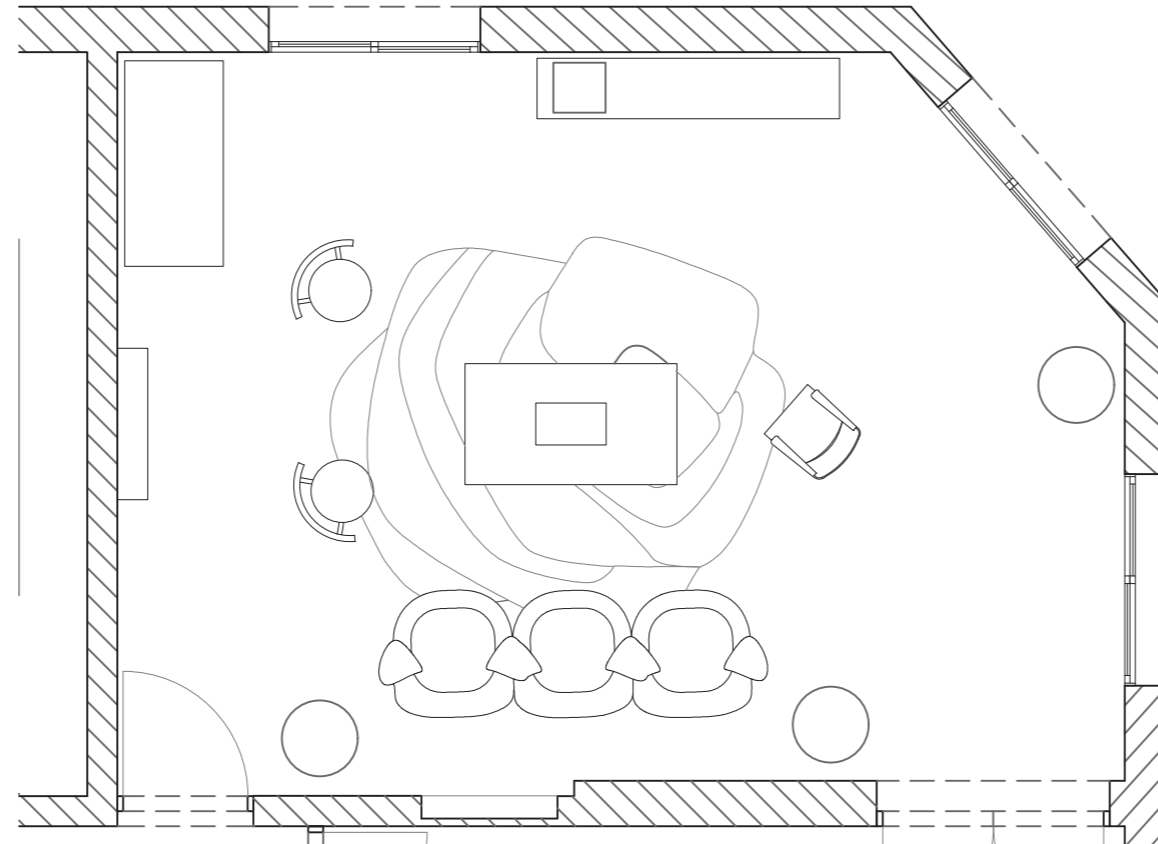
# FLOOR PLAN

## NEW LIVINGROOM



# FLOOR PLAN

## NEW LIVINGROOM



# MOODBOARD



# MOODBOARD



# MOODBOARD



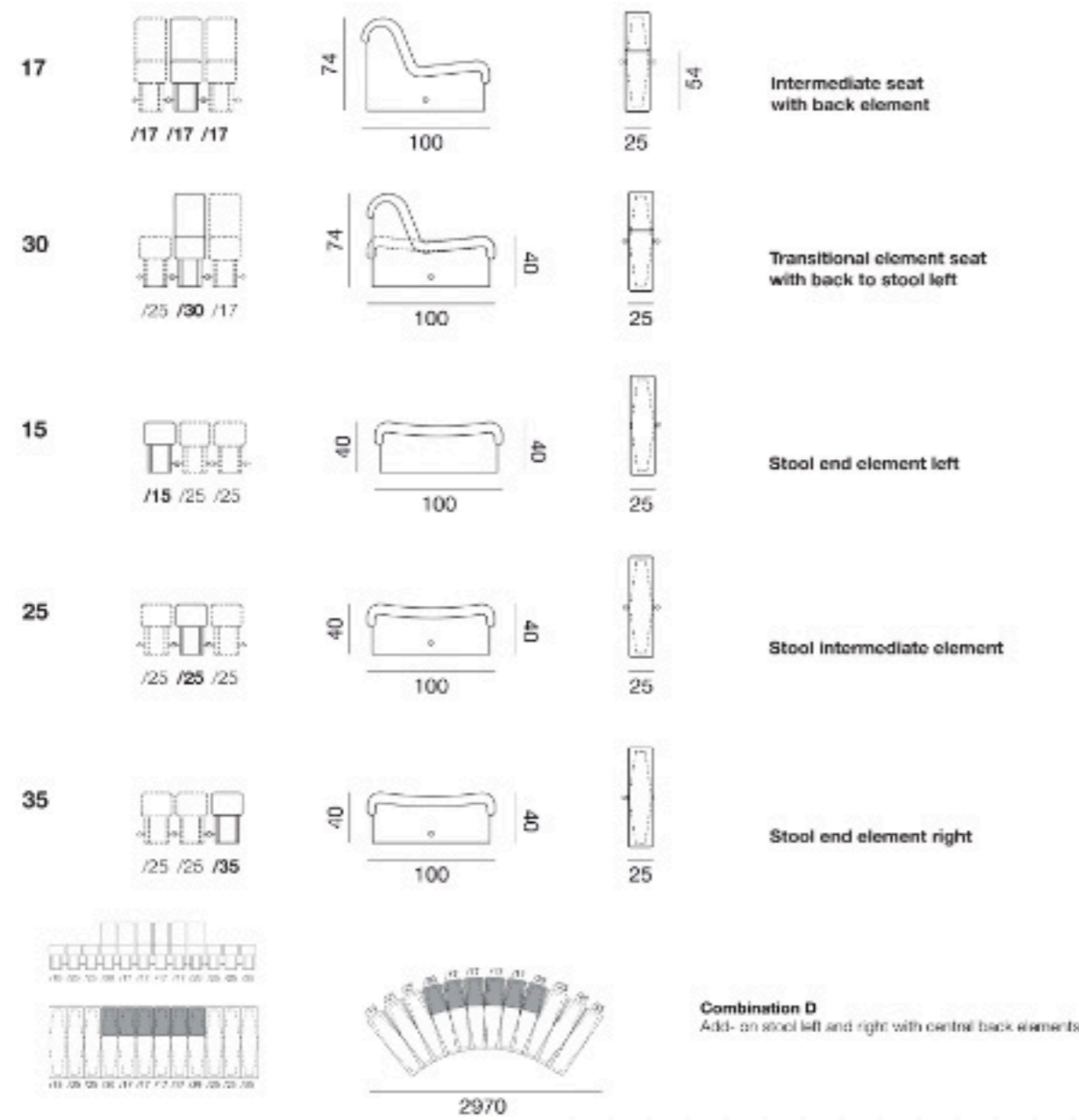
**FURNITURE**

# LIVING ROOM

## SOFA

Named after a mythical alpine creature, the Tatzelwurm, our **DS-600** has embodied the de Sede lifestyle for over 45 years. With its modular elements that can be expanded to suit every individual taste, it has traveled the world and even found its place in the Guinness Book of Records as the world's longest sofa.

### DS-600



**Texture**  
Cafe

**Thickness**  
1.5 to 1.7 mm

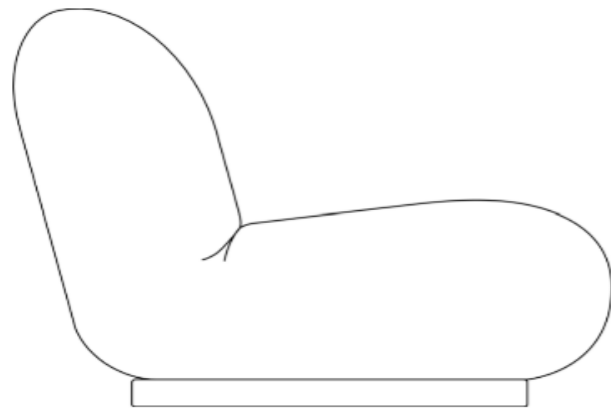
**Characteristics**  
Lightly pigmented with lightly embossed grain pattern. Elegant in appearance, particularly durable, less sensitive to humidity, spots and light exposure thanks to an easy-care finish. Living unites practical considerations with a high aesthetic.



# LIVING ROOM

## SOFA

Legendary French designer **Pierre Paulin** designed the Pacha chair in 1975. He designed the chair in harmony with the changing style of the time and replaced the post-war ascendancy with a new energetic approach. Paulin managed to give true elegance to the chair's rounded forms, finding the perfect proportions and raising it slightly off the ground. In this way, he created a modern way of living and sitting on the floor, avoiding chair legs. With comfort as a constant starting point for his creations, the sinuous, whimsical and incredibly organic shapes of the Pacha chair are designed to offer enormous comfort and spread comfort throughout the home. This thinking about comfort and wellness has fully succeeded in keeping GUBI in their updated version of this famous classic. The Pacha is an honest and functional piece of aesthetic pleasure that brings life and character to any decor.



**Total Dimensions (DxWxH):** 85x231x65 cm

**Sitting height:** 35 cm

**Weight (kg):** 63

**Item Number:** 10056881



**Texture**  
karakorum 001

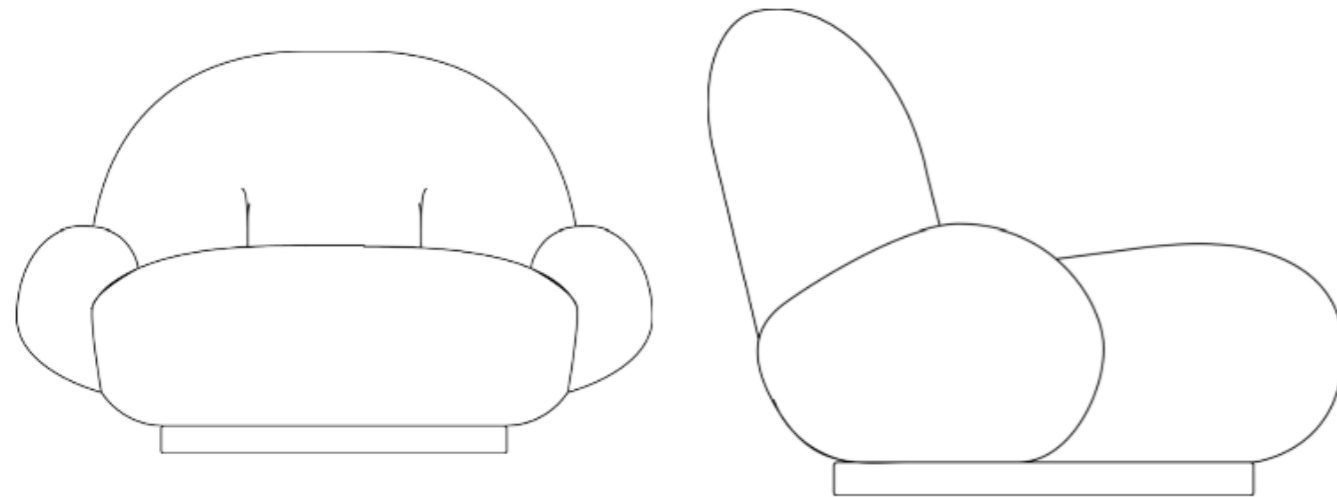
**Weight**  
1040 g/ml

**Characteristics**  
A bouclé that intertwines wool and viscose in an uneven texture of loops and curls, inspired by precious astrakhan furs. With its soft and bulky hand-feel, this fabric is ideal for upholstery destined for an intensive use.



# LIVING ROOM ARMCHAIR

Legendary French designer **Pierre Paulin** designed the Pacha chair in 1975. He designed the chair in harmony with the changing style of the time and replaced the post-war ascendancy with a new energetic approach. Paulin managed to give true elegance to the chair's rounded forms, finding the perfect proportions and raising it slightly off the ground. In this way, he created a modern way of living and sitting on the floor, avoiding chair legs. With comfort as a constant starting point for his creations, the sinuous, whimsical and incredibly organic shapes of the Pacha chair are designed to offer enormous comfort and spread comfort throughout the home. This thinking about comfort and wellness has fully succeeded in keeping GUBI in their updated version of this famous classic. The Pacha is an honest and functional piece of aesthetic pleasure that brings life and character to any decor.



**Total Dimensions (DxWxH):**

85x100x65 cm

**Sitting height:**

35 cm

**Weight (kg):**

26.4

**Item Number:**

10067488



**Texture**

karakorum 001

**Weight**

1040 g/ml

**Characteristics**

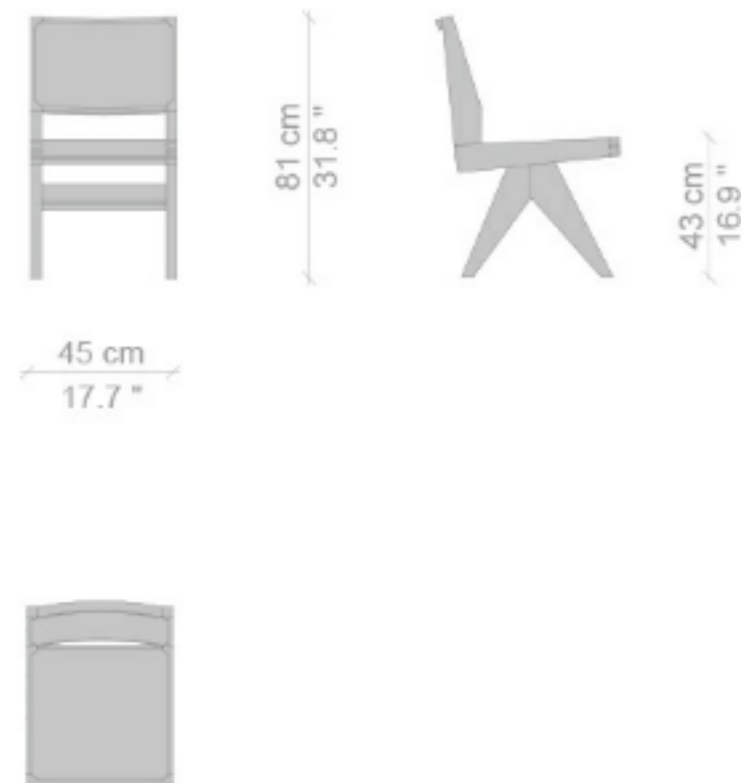
A bouclé that intertwines wool and viscose in an uneven texture of loops and curls, inspired by precious astrakhan furs. With its soft and bulky hand-feel, this fabric is ideal for upholstery destined for an intensive use.



# LIVING ROOM ARMCHAIR

One of the most well-known pieces from the Capitol Complex in the Indian city of Chandigarh, the solid wood design chair, a tribute to Pierre Jeanneret, is set apart by its unique construction in oak or teak with seat in Viennese cane.

The structure is made up of the characteristic lateral supports that converge to form an inverted "V", a technical solution already shared by many of the pieces in the Hommage à Pierre Jeanneret collection.



## Texture

Dark walnut stained oak wood

## Characteristics

It's prized by woodworkers for its strength, grain and color. It polishes to a very smooth finish, and the color ranges from creamy white in the sapwood to a dark chocolate in the heartwood. Over the years, natural walnut wood develops a lustrous patina.



# LIVING ROOM

## COFFEE TABLE

Iconic Rectangular coffee table by **Willy Rizzo** in burl veneer and brass contour.

Dimensions:  
L140 x W 80cm x H30cm  
Italy, 1970s.

### Dimensions

Height: 11.82 in. (30 cm)  
Width: 55.12 in. (140 cm)  
Depth: 31.5 in. (80 cm)

### Style

Mid-Century Modern (Of the Period)

### Materials and Techniques

Brass, Burl

### Place of Origin

Italy

### Period

1970-1979

### Date of Manufacture

1970s



### Texture

Brass and Burl





# LIVING ROOM CARPET

## Vertige Rug

The Vertigo rug is made of bamboo fibers and represents a patchwork of small rectangular plots that each vary in height. The inspiration behind the design is in line with Mirage screens.

High density hand tufted carpet, full cut pile, 100% bamboo.

Customized dimensions.



## Assouan Rug

For their second collection, Raphaël Le Berre and Thomas Vevaud celebrate the unparalleled know-how of French craftsmanship through a series of exceptional designs. The Empreinte collection stems from their shared passion for furniture, noble materials and craftsmanship; each piece of furniture created for the many private projects undertaken by the interior design duo. This new collection finds unexpected connections between the modernist movements of the 1930s and more contemporary accents, weaving past and present into timeless designs. Empreinte is marked by the pairing of contrasting textures, and feel: precious objects inspired by the brutalist aesthetic, designs that stand out for their astonishing palette of colours and timeless shapes. The collection is entirely produced in France.

Empreinte Collection  
100% wool from New Zealand  
Hand-tufted

245 x 300 cm



# LIVING ROOM

## FLOOR LAMP

**Billy BL Ilse Crawford** Edition was re-created by London-based designer Ilse Crawford for Kalmar Werkstätten. Crawford adds sophistication, humility and warmth to the utilitarian design of the floor lamp. In the variation, a rosewood stem standing on satin-brass feet replaces the unstained oak and colored lacquer of the original. The lampshade features a duotone finish, matte black exterior with satin brass interior, creating an ambient feel. Like its table version, Billy BL highlights both industrial and anthropomorphic qualities.

### Technical Info

Dimensions: Shade Diameter 36 x 56.5 x H 160 cm

Recommended light source: 1 x E27 60W

Material: Rosewood, Brass and Matt Black Lacquered

Shade: Metal

Cable: Wheat Color Textile



## LIVING ROOM FLOOR LAMP

In the 1950s and 1960s, **Jean Royère** develops his ornamentation from modern materials, while combining unexpected colors. He especially deforms the metal tube which becomes an undulating line and the engine of his decorative repertoire, creating a whole register of organic and vegetal forms. Like a climbing plant, the Liane luminaire, of which there are several models, is a true formal invention that goes beyond the function of lighting.

Jean Royère Luminaire « Liane », 1961 Black lacquered metal, Rhodoïd lampshade  
240 x 200 cm



# LIVING ROOM FLOOR LAMP

**Artist:**

Set altug, 1970.

**Technical Info**

Dimensions: Diameter 50 cm x H 130 cm

Recommended light source: 1 x E27 60W

Material: stainless steel

Shade: Metal



# LIVING ROOM

## SCULPTURE

**Artist:**

Ilio Signori (Italian, born 1929)

**Title:**

LA FAMILLE , ca. 1960

**Medium:**

bronze

**Size:**

70x35 cm.



# CINEMA ROOM LOUNGE CHAIR

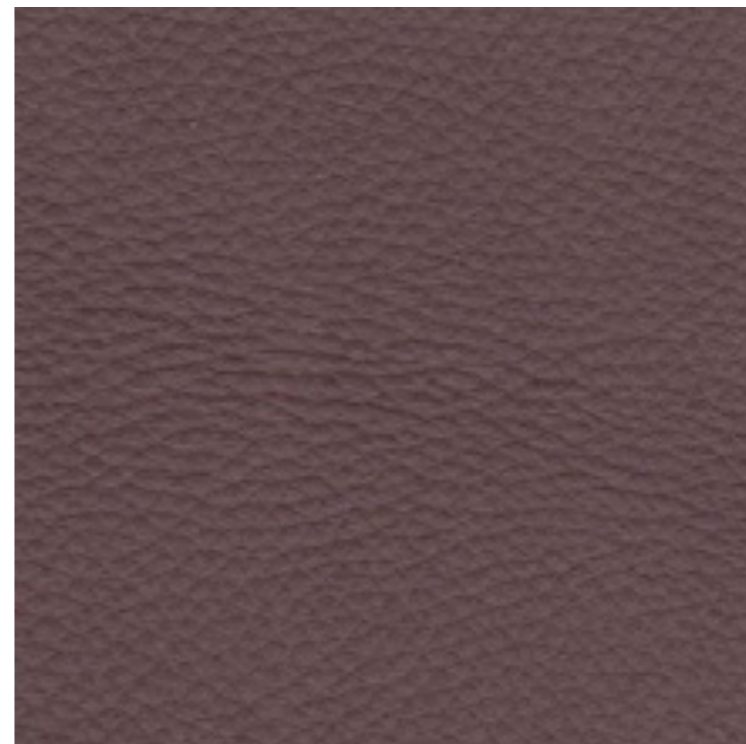
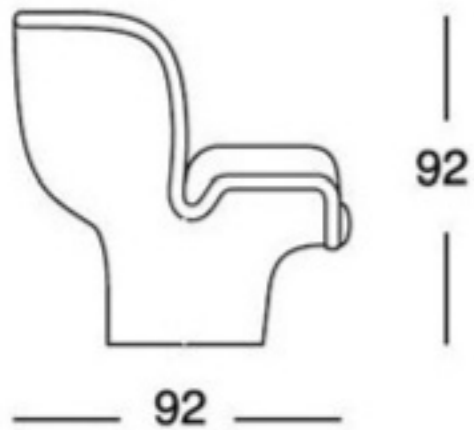
Italian Elda chair by **Joe Colombo** for Comfort, 1963. Named after Colombo's wife «Elda», is a beautiful armchair with a 360 degree swivel shell made of fiberglass. Its original design in molds is an entirely manual technique. The leather covers are not removable due to the anatomical expanded polyurethane padding covered with Dacron. The outer shell is made of white fiberglass. This design chair is an essential ele-

## PRODUCT CHARACTERISTICS

Designer: Joe COLOMBO  
Origin: Italian  
Edition: 60s  
Color: Brown  
Main material: Leather  
Secondary material : Fiberglass

## DIMENSIONS

Length : 92 cm  
Height : 92 cm  
Depth : 92 cm



**Texture**  
Piumone cat.P.9|col.5053

**Thickness**  
1.5 to 1.7 mm

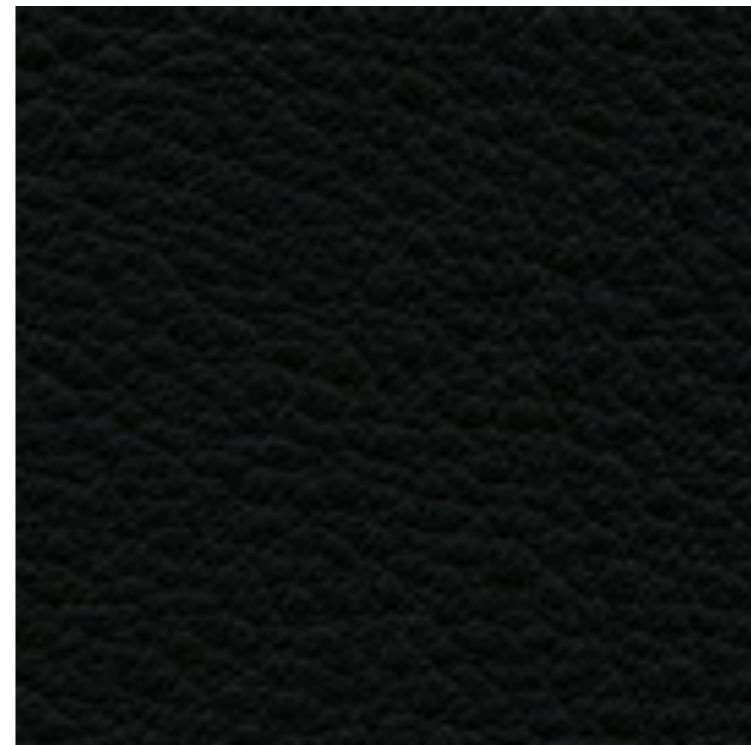
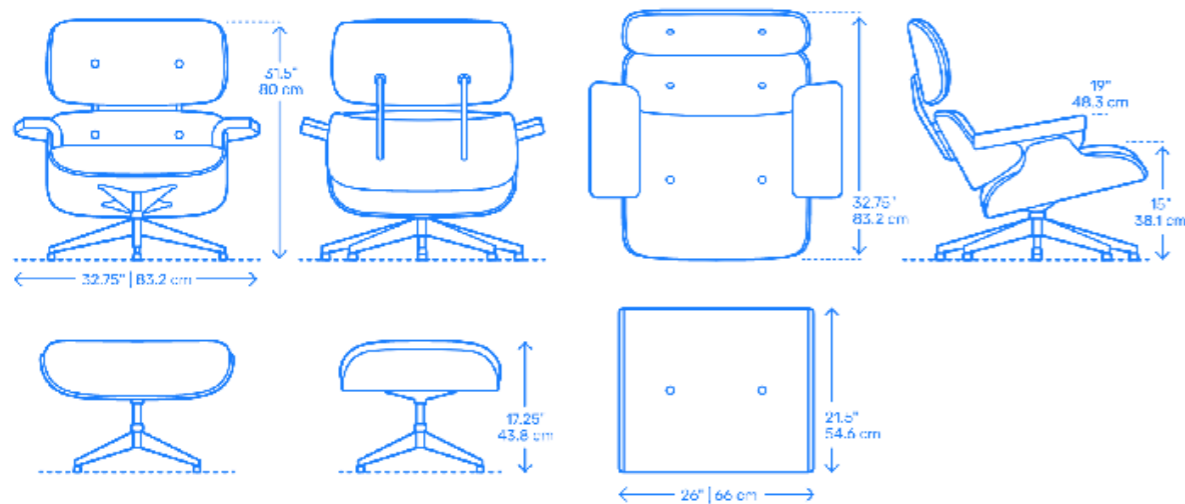


# CINEMA ROOM LOUNGE CHAIR

When the Eames Lounge Chair and Ottoman was introduced in 1956, there was nothing like it, and there is still nothing to equal it. **Charles and Ray's** modern take on a 19th century club chair has not only endured for decades, it has become one of the most significant furniture designs of the 20th century—instantly recognizable and enduringly fresh.

## Description of the material

- Seat and backrest: curved plywood, various veneers. Classic version in American cherry (USA), Santos rosewood (Bolivia; certified sustainable development) or black pigmented walnut (USA). White version: white pigmented walnut (USA). Black version: black lacquered ash (Germany).
- Upholstery/clothing: removable upholstery units, leather upholstery. Seat height: 380 mm (250 mm with applied load, measured according to EN 1335-1:2000).
- Armrests: leather upholstery, connected to the seat and backrest shells by rubber and metal connectors.
- Legs: five-star swivel base or four-star fixed base (Ottoman). Legs and backrest brackets in die-cast aluminum.
- Glides: all legs are equipped with hard glides for carpeting; felt glides for hard floors available as an option.



**Texture**  
66 nero  
Premium Leather

**Thickness**  
1.1 to 1.3 mm

**Characteristics**  
Premium leather is a relatively smooth cowhide with a flat grain and a slightly shiny surface. It is dyed and lightly pigmented. Semi-aniline leather is soft to the touch.

